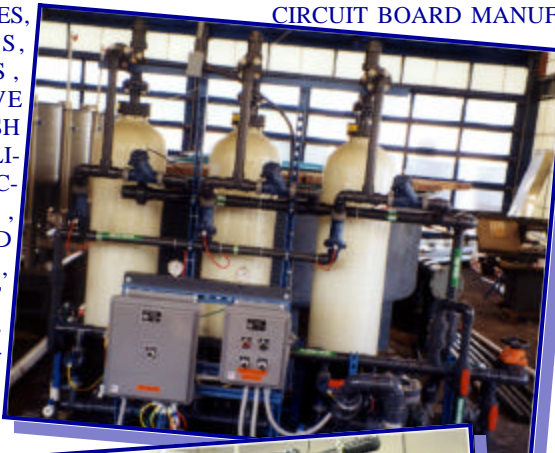


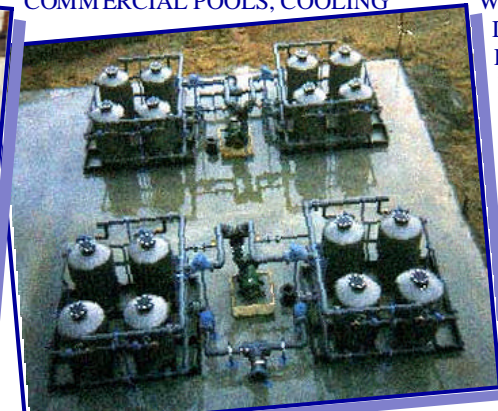
DIAMOND WATER SYSTEMS, INC.

ENGINEERED FOR TODAY'S ENVIRONMENT

AQUACULTURE, AQUARIUM EXHIBITS, APARTMENT
 CAR WASHES, LAUNDRIES, SYSTEMS,
 DECORATIVE TAINS, FISHING FACILI-
 FOOD PROC PLANTS, WATER AND
 WATER, ERNMENT C I E S,
 ICS MATE-MANUFAC-TURERS,
 HATCHER-HOSP I-A N D
 HOMES, AND MO-LABORA-
 LAND AND BASED SYS-
 MARICUL-P H O T O
 ING FACILI-PL ATING
 NIES, POTAT-ER, POWER
 TION FACILI-PROCESS



COMPLEXES, BOILER SYSTEMS, BOTTLING FACILITIES,
 CIRCUIT BOARD MANUFACTURERS, COIN-OP LAUNDROMATS, COMMERCIAL
 COMMERCIAL POOLS, COOLING



W A T E R
 DAIRIES,
 F O U N -
 PROCESS-
 T I E S,
 ESSING
 FRESH-
 S E A -
 G O V -
 AGEN-
 GRAPH-
 R I A L

I E S,
 T A L S
 N U R S I N G
 HOTELS
 T E L S,
 T O R I E S,
 S E A
 T E M S,
 T U R E,
 PROCESS-
 T I E S,
 COMPA-
 BLE WA-
 GENERA-
 T I E S,
 R A N T S, R E -
 UNIFORM

WATER SYSTEMS, RESTAU-
 RESEARCH AND DEVELOPMENT FACILITIES, SHELLFISH PURIFICATION, TRAILER PARKS,
 RENTAL COMPANIES, UNIVERSITIES AND SCHOOLS, WASTEWATER TREATMENT, ZERO-DISCHARGE SYSTEMS,
 ZOOLOGICAL EXHIBITS

**THE HIGHEST QUALITY COMMERCIAL AND INDUSTRIAL
 WATER FILTRATION EQUIPMENT**

ONE BIGELOW STREET HOLYOKE, MA 01040

Phone: 413/536-8186

Fax: 413/536-7267

<http://www.diamondwater.com>

e-mail: support@diamondwater.com

VARIABLE FLOW WATER FILTRATION SYSTEMS

- ∅ **Designed for** installations where flow varies.
- ∅ **Unused filtrate** is recirculated through filter during periods of non-peak demand.
- ∅ **Available in** nominal 0.5, 2.0,



5.0, and 10.0 micron extraction ratings.

- ∅ **Sized for** maximum efficiency.
- ∅ **Service factors** anticipate high suspended solids levels.

FULL FLOW WATER FILTRATION SYSTEMS



- ∅ **Designed for** applications where the required flow rate is constant.
- ∅ **Applicable to** potable and process water operations with consistent flow rates.
- ∅ **Available in** nominal 0.5, 2.0, 5.0, and 10.0 micron extraction ratings.

CONVENTIONAL WATER FILTRATION SYSTEMS

- ∅ Primarily designed to remove heavy loads of suspended solids in the **10.0 to 20.0** micron range (nominal extraction).
- ∅ Excellent **pre-filters** for **Diamond's** Non-Conventional systems.
- ∅ May be **stand-alone** full-flow filters.
- ∅ Flow rate is based on 15 GPM per square foot of media surface area.



WATER SOFTENERS

Diamond Water Systems water softeners are suitable for a wide range of applications ranging from Apartments to Zoos.

- ∅ Specifically designed for **commercial and industrial facilities**.
- ∅ Available for **any size flow rate** requiring high quality water treatment.
- ∅ **High performance** and durability.
- ∅ **User-friendly** controls for easy adjustment and maintenance.
- ∅ **Single vessel, twin alternating,** and **multi-vessel** softening systems with integrated controls are available.



COOLING TOWER FILTRATION



- ∅ **High Efficiency** 0.5 Micron (nominal) extraction
- ∅ **Space Saving** Size
- ∅ **Lower** Capital, Installation and Operating **Costs**
- ∅ **Minimal Backwash Water** Used
- ∅ **12 GPM to 4,000+ GPM** Systems
- ∅ **Pilot** Studies and **Custom Designs** Available

SWIMMING POOL FILTRATION

SPF SERIES SYSTEMS

High-Rate Sand Filtration at its Finest



Diamond's Swimming Pool Filters, the **SPF Series**, are designed with the operator and facility in mind. Built to last, the **SPF Series** systems use commercial-duty equipment and components to maintain the greatest long-term efficiency. System and component selection is based on the needs of the installation and the desires of the client.

Diamond's National Swimming Pool Foundation (NSPF) certified swimming pool operators are readily available to assist operators in the maintenance of most swimming pool circulation systems.

CARBON FILTERS



Granular activated carbon filter systems are used to remove chlorine, taste, odors, radon, petroleum products, pesticides, organics, and other contaminants from water. DWSI offers a complete selection of carbon filters, from small manually-operated to large fully-automated systems.

ULTRAVIOLET SYSTEMS



Diamond ultraviolet disinfection systems utilize the effects of ultraviolet light radiation for controlling bacteriological growth and reducing total organic carbon in water. A wide selection of units are offered, ranging from 1 GPM to over 1,000 GPM capacity.

CARTRIDGE FILTERS



For removal of different contaminants, a wide selection of cartridges are available. Flow rates for cartridge filters may range from 1 GPM to over 600 GPM.

BAG FILTERS



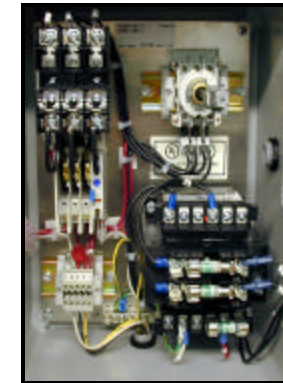
We offer bag filters for various applications, from pre-filters to portable units like the ones shown here.

In addition to these systems, [DWSI](#) offers several other filtration technologies, such as Iron Removal Systems, Reverse Osmosis, De-Ionization, Electro-De-Ionization, Clarifiers, Filter Presses, and more...

FILTER CONTROL SYSTEMS

Filter control systems can be provided to suit your facility's need and budget.

Automatic control systems are designed with operating ease and efficiency as priorities. Standard controls are equipped with **multi-port solenoid valves** for automated valve operation. Backwash is initiated by three methods: **pre-set timer**, **differential pressure switch**, or with a **manual push-button**. All controls feature a **single contact point** for easy electrical connection and are normally enclosed in **NEMA 4X non-metallic** cabinets.



Motor starter control package for operation of filter pump, with single-point connection, thermal overload, and through-the-door disconnect.



Programmable control unit with user interface.



Water softener control system.

DWSI offers control systems for special filtration applications.

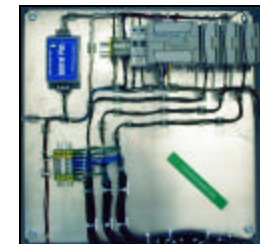
Programmable Logic Controllers available for any Application.



Basic PLC-based control system.



Operator interface panel with LCD display, and soft-touch keypad, in a NEMA 4X enclosure.



Advanced PLC-based control system.

MATERIALS OF CONSTRUCTION

VESSELS: 304 and 316 Stainless Steel, Carbon Steel, Fiberglass, with two side ports and flanged access port. Carbon Steel vessels available with lining. Fiberglass vessels equipped with non-metallic support base. All vessels available with ASME certification stamp as required.



PUMPS: Pump casings available in Ductile and Cast Iron, 316 Stainless Steel, and Fiberglass, with working pressures up to 300 psig. Open Drip Proof (ODP) and Totally Enclosed Fan Cooled (TEFC) motor enclosures offered. Explosion proof as required.



VALVES: Valve bodies in Iron, Bronze, Thermoplastic, PVC, and Stainless Steel. Valve actuation may be either manual or automatic (pneumatic, hydraulic, or electric). Valve styles include diaphragm, wafer, ball, and piston type.



MANIFOLD: Manifold piping available in Schedule 80 PVC, Type L Copper, ASME Code Welded Steel, and Steel Victaulic. Other manifold piping materials available upon request.